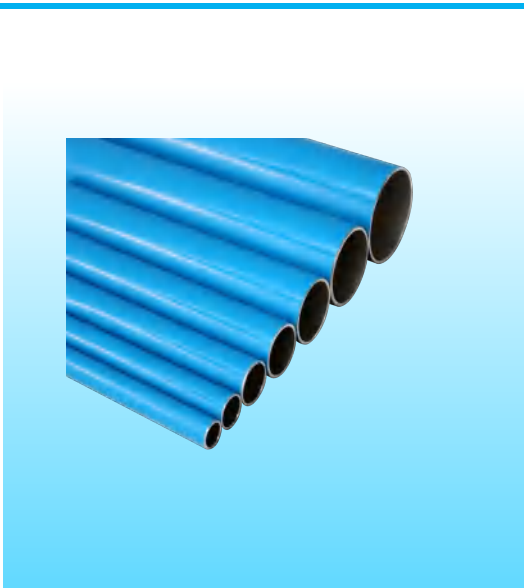


► Blue Aluminum Pipe



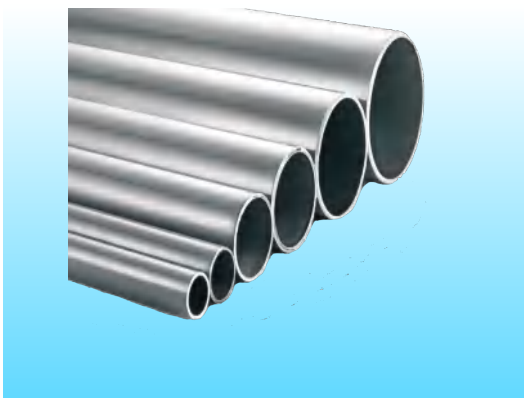
Description	øD	Part Number	H.S.Code
ø20X1.45mm, Color: RAL5012	DN20*6000mm	17226000	7608201090
ø24.8X1.45mm, Color: RAL5012	DN25*6000mm	17336000	7608201090
ø32.2X1.6mm, Color: RAL5012	DN32*6000mm	2015336000	7608201090
ø42X1.9mm, Color: RAL5012	DN42*6000mm	17556000	7608201090
ø50.6X2.1mm, both ends bead rolled, Color: RAL5012	DN50*6000mm	2015556002	7608201090
ø63.5X2.3mm, both ends bead rolled, Color: RAL5012	DN65*6000mm	2019666002	7608201090
ø88.9X2.6mm, both ends bead rolled, Color: RAL5012	DN80*6000mm	2019886002	7608201090
ø100.2X2.6mm, both ends bead rolled, Color: RAL5012	DN100*6000mm	2015996002	7608201090
ø133X2.75mm, both ends bead rolled, Color: RAL5012	DN125*6000mm	16CC6002	7608201090
ø148.2X3mm, both ends bead rolled, Color: RAL5012	DN148*6000mm	2015AA6002	7608201090
ø205X3.2mm, both ends bead rolled, Color: RAL5012	DN200*6000mm	2015BB6002	7608201090

► Yellow Aluminum Pipe



Description	øD	Part Number	H.S.Code
ø20X1.45mm, Color: RAL1028	DN20*6000mm	17226100	7608201090
ø24.8X1.45mm, Color: RAL1028	DN25*6000mm	17336100	7608201090
ø32.2X1.6mm, Color: RAL1028	DN32*6000mm	2015336100	7608201090
ø42X1.9mm, Color: RAL1028	DN42*6000mm	17556100	7608201090
ø50.6X2.1mm, both ends bead rolled, Color: RAL1028	DN50*6000mm	2015556102	7608201090
ø63.5X2.3mm, both ends bead rolled, Color: RAL1028	DN65*6000mm	2019666102	7608201090
ø88.9X2.6mm, both ends bead rolled, Color: RAL1028	DN80*6000mm	2019886102	7608201090
ø100.2X2.6mm, both ends bead rolled, Color: RAL1028	DN100*6000mm	2015996102	7608201090
ø133X2.75mm, both ends bead rolled, Color: RAL1028	DN125*6000mm	16CC6102	7608201090
ø148.2X3mm, both ends bead rolled, Color: RAL1028	DN148*6000mm	2015AA6102	7608201090
ø205X3.2mm, both ends bead rolled, Color: RAL1028	DN200*6000mm	2015BB6102	7608201090

► Gray Aluminum Pipe



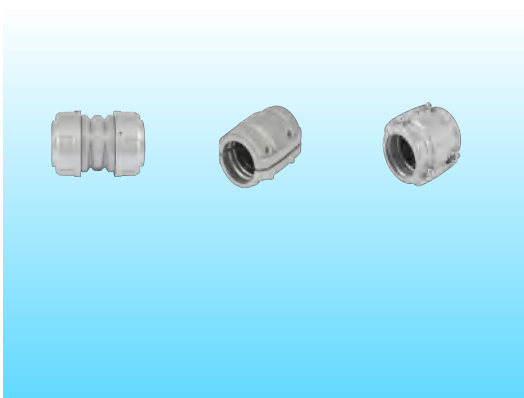
Description	øD	Part Number	H.S.Code
ø20X1.45mm, Color: RAL7046	DN20*6000mm	17226H00	7608201090
ø24.8X1.45mm, Color: RAL7046	DN25*6000mm	17336H00	7608201090
ø32.2X1.6mm, Color: RAL7046	DN32*6000mm	2015336H00	7608201090
ø42X1.9mm, Color: RAL7046	DN42*6000mm	17556H00	7608201090
ø50.6X2.1mm, both ends bead rolled, Color: RAL7046	DN50*6000mm	2015556H02	7608201090
ø63.5X2.3mm, both ends bead rolled, Color: RAL7046	DN65*6000mm	2019666H02	7608201090
ø88.9X2.6mm, both ends bead rolled, Color: RAL7046	DN80*6000mm	2019886H02	7608201090
ø100.2X2.6mm, both ends bead rolled, Color: RAL7046	DN100*6000mm	2015996H02	7608201090
ø133X2.75mm, both ends bead rolled, Color: RAL7046	DN125*6000mm	16CC6H02	7608201090
ø148.2X3mm, both ends bead rolled, Color: RAL7046	DN148*6000mm	2015AA6H02	7608201090
ø205X3.2mm, both ends bead rolled, Color: RAL7046	DN200*6000mm	2015BB6H02	7608201090

► 30° Hydraulic Hose



Description	øD	Part Number	H.S.Code
600mm	DN20	16225000	4009210000
700mm	DN25	16335000	4009210000
800mm	DN32	16445000	4009210000
900mm	DN42	2019445000	4009210000

► Equal Pipe to Pipe Connector



Description	øD	Part Number	H.S.Code
Push in fit	DN20	16220200	76090000
Push in fit	DN25	16330200	76090000
Push in fit	DN32	16440200	76090000
Push in fit	DN42	16550200	76090000
Clamp, Suitable for Bead Rolled Pipe	DN50	2019550202	76090000
Clamp, Suitable for Bead Rolled Pipe	DN65	2019660202	76090000
Clamp, Suitable for Bead Rolled Pipe	DN80	2019880202	76090000
Clamp, Suitable for Bead Rolled Pipe	DN100	2019990202	76090000
Clamp, Suitable for Bead Rolled Pipe	DN125	2019CC0202	76090000
Clamp, Suitable for Bead Rolled Pipe	DN148	2015AA0202	76090000
Clamp, Suitable for Bead Rolled Pipe	DN200	2015BB0202	76090000

► Equal Tee



Description	øD	Part Number	H.S.Code
Push in fit	DN20	16220500	76090000
Push in fit	DN25	16330500	76090000
Push in fit	DN32	16440500	76090000
Push in fit	DN42	16550500	76090000
Need to add three DN50 Clamps	DN50	2019550500	76090000
Need to add three DN65 Clamps	DN65	2019660500	76090000
Need to add three DN80 Clamps	DN80	2019880500	76090000
Need to add three DN100 Clamps	DN100	2015990500	76090000
Square, Suitable for Bead Rolled Pipe	DN125	F16CC050	76090000
Need to add three DN148 Clamps	DN148	2015AA0500	76090000
Need to add three DN200 Clamps	DN200	2015BB05	76090000

► 90° Elbow



Description	øD	Part Number	H.S.Code
Push in fit	DN20	16220300	76090000
Push in fit	DN25	16330300	76090000
Push in fit	DN32	16440300	76090000
Push in fit	DN42	16550300	76090000
Need to add two DN50 Clamps	DN50	2019550300	76090000
Need to add two DN65 Clamps	DN65	2019660300	76090000
Need to add two DN80 Clamps	DN80	2019880300	76090000
Need to add two DN100 Clamps	DN100	2015990300	76090000
Suitable for Bead Rolled Pipe	DN125	F16CC0300	76090000
Need to add two DN148 Clamps	DN148	2015AA0300	76090000
Need to add two DN200 Clamps	DN200	2015BB0300	76090000

► Reducing Pipe to Pipe Connector



Description	øD	Part Number	H.S.Code
Push in fit	DN25-DN20	16320900	76090000
Push in fit	DN32-DN20	16420900	76090000
Push in fit	DN32-DN25	16430900	76090000
Push in fit	DN42-DN25	16530900	76090000
Push in fit	DN42-DN32	16540900	76090000
Need to add one DN50 Clamp	DN50-DN42	2019540900	76090000
Need to add one DN65 Clamp	DN65-DN42	2019640900	76090000
Need to add one DN65 Clamp and one DN50 Clamp	DN65-DN50	2019650900	76090000
Need to add one DN80 Clamp	DN80-DN42	2019840900	76090000
Need to add one DN80 Clamp and one DN50 Clamp	DN80-DN50	2019850900	76090000
Need to add one DN80 Clamp and one DN65 Clamp	DN80-DN65	2019860900	76090000
Need to add one DN100 Clamp	DN100-DN42	2019940900	76090000
Need to add one DN100 Clamp and one DN50 Clamp	DN100-DN50	2019950900	76090000
Need to add one DN100 Clamp and one DN65 Clamp	DN100-DN65	2019960900	76090000
Need to add one DN100 Clamp and one DN80 Clamp	DN100-DN80	2019980900	76090000
Square, Suitable for Bead Rolled Pipe	DN125-DN100	F16C90900	76090000
Need to add one DN148 Clamp and one DN100 Clamp	DN148-DN100	2015A90900	76090000
Need to add one DN148 Clamp and one DN125 Clamp	DN148-DN125	2019AC0900	76090000
Need to add one DN200 Clamp and one DN100 Clamp	DN200-DN100	16B90900	76090000
Need to add one DN200 Clamp and one DN125 Clamp	DN200-DN125	2019BC0900	76090000
Need to add one DN200 Clamp and one DN148 Clamp	DN200-DN148	16BA0900	76090000

► Reducing Tee



Description	øD	Part Number	H.S.Code
Push in fit	DN25-DN20	16320700	76090000
Push in fit	DN32-DN25	16430700	76090000
Push in fit	DN42-DN25	16530700	76090000
Push in fit	DN42-DN32	16540700	76090000
Need to add two DN50 Clamps	DN50-DN42	2019540700	76090000
Need to add two DN65 Clamps	DN65-DN42	2019640700	76090000
Need to add two DN65 Clamps and one DN50 Clamp	DN65-DN50	2019650700	76090000
Need to add two DN80 Clamps	DN80-DN42	2019840700	76090000
Need to add two DN80 Clamps and one DN50 Clamp	DN80-DN50	2019850700	76090000
Need to add two DN80 Clamps and one DN65 Clamp	DN80-DN65	2019860700	76090000
Need to add two DN100 Clamps and one DN50 Clamp	DN100-DN50	2019950700	76090000
Need to add two DN100 Clamps and one DN65 Clamp	DN100-DN65	2019960700	76090000
Need to add two DN100 Clamps and one DN80 Clamp	DN100-DN80	2019980700	76090000
Need to add two DN125 Clamps and one DN65 Clamp	DN125-DN65	2019C60700	76090000
Need to add two DN125 Clamps and one DN80 Clamp	DN125-DN80	2019C80700	76090000
Square, Suitable for Bead Rolled Pipe	DN125-DN100	F16C90700	76090000
Need to add two DN148 Clamps and one DN65 Clamp	DN148-DN65	2019A60700	76090000
Need to add two DN148 Clamps and one DN80 Clamp	DN148-DN80	2019A80700	76090000
Need to add two DN148 Clamps and one DN100 Clamp	DN148-DN100	2015A90700	76090000
Need to add two DN200 Clamps and one DN100 Clamp	DN200-DN100	2015B90700	76090000
Need to add two DN200 Clamps and one DN148 Clamp	DN200×DN148	2015BA0700	76090000

► Female Threaded Reducing Tee



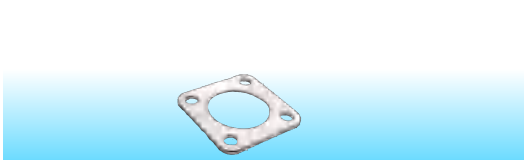
Description	øD	Part Number	H.S.Code
Two sides Push in fit, the other side female threaded	DN20×1/2"	16201900	76090000
Two sides Push in fit, the other side female threaded	DN20×3/4"	16211900	76090000
Two sides Push in fit, the other side female threaded	DN25×1/2"	16301900	76090000
Two sides Push in fit, the other side female threaded	DN25×3/4"	16311900	76090000
Two sides Push in fit, the other side female threaded	DN25×1"	16321900	76090000
Two sides Push in fit, the other side female threaded	DN32×3/4"	16411900	76090000
Two sides Push in fit, the other side female threaded	DN32×1"	16421900	76090000
Two sides Push in fit, the other side female threaded	DN32×1"1/4"	16431900	76090000
Two sides Push in fit, the other side female threaded	DN42×1"1/4"	16531900	76090000
Two sides Push in fit, the other side female threaded	DN42×1"1/2"	16541900	76090000
Need to add two DN50 Clamps	DN50×1"1/2"	2019541900	76090000
Need to add two DN65 Clamps	DN65×1"1/2"	2019641900	76090000
Need to add two DN80 Clamps	DN80×2"1/2"	2019861900	76090000
Square, Suitable for Bead Rolled Pipe	DN125×4"	F16C91900	76090000
Need to add two DN148 Clamps	DN148×3"	16A81900	76090000

► 90° Reducing Elbow



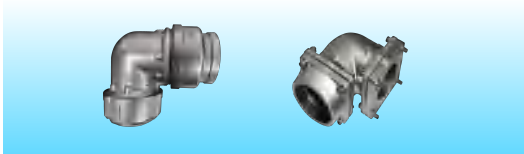
Description	øD	Part Number	H.S.Code
Square 90°Reducing Elbow	DN125-DN100	F16C90300	76090000

► Square Gasket



Description	øD	Part Number	H.S.Code
Suitable for DN125 Square Fittings	/	F16CC0201	76090000

► Female Threaded 90°Elbow



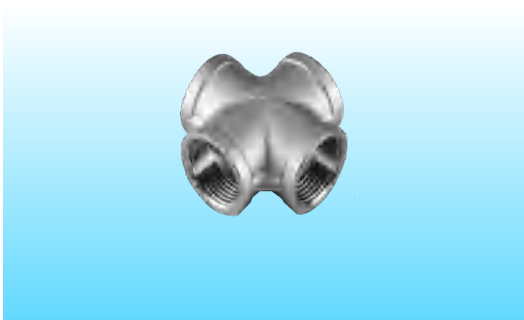
Description	øD	Part Number	H.S.Code
/	DN20×1/2"	16102000	76090000
/	DN20×3/4"	16112000	76090000
/	DN25×1"	16222000	76090000
Square Female Threaded 90°elbow	DN125×4"	F16C92000	76090000

► Y Tee



Description	øD	Part Number	H.S.Code
Brass	DN1/2"×1/4"*2	2006000800	76090000
Brass	DN3/4"×1/2"*2	2006100800	76090000

► Equal Cross



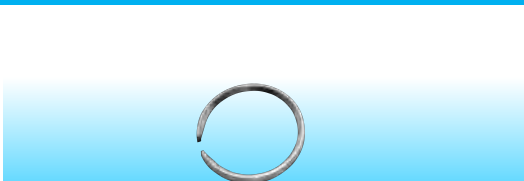
Description	øD	Part Number	H.S.Code
SUS304, Female Threaded	DN25	20062281BU	76090000
SUS304, Female Threaded	DN32	20063381BU	76090000
SUS304, Female Threaded	DN40	20064481BU	76090000
SUS304, Female Threaded	DN50	20065581BU	76090000
SUS304, Female Threaded	DN63	20066681BU	76090000
SUS304, Female Threaded	DN80	20068881BU	76090000
SUS304, Female Threaded	DN100	20069981BU	76090000

► 45° Elbow



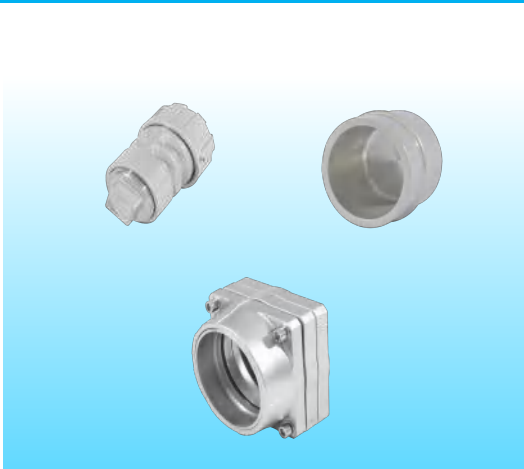
Description	øD	Part Number	H.S.Code
SUS304, Female Threaded	DN25	20062204BU	76090000
SUS304, Female Threaded	DN32	20063304BU	76090000
SUS304, Female Threaded	DN40	20064404BU	76090000
SUS304, Female Threaded	DN50	20065504BU	76090000
SUS304, Female Threaded	DN63	20066604BU	76090000
SUS304, Female Threaded	DN80	20068804BU	76090000
SUS304, Female Threaded	DN100	20069904BU	76090000

► SS Clamp Ring



Description	øD	Part Number	H.S.Code
/	DN42	201944A600	76090000
/	DN50	201955A600	76090000
/	DN65	201966A600	76090000

► End Cap



Description	øD	Part Number	H.S.Code
/	DN20	16200600	76090000
/	DN25	16300600	76090000
/	DN32	16400600	76090000
/	DN42	16500600	76090000
Need to add one DN50 Clamp	DN50	2019500600	76090000
Need to add one DN65 Clamp	DN65	2019600600	76090000
Need to add one DN80 Clamp	DN80	2019800600	76090000
Need to add one DN100 Clamp	DN100	2015900600	76090000
Square End Eap	DN125	F16C00600	76090000
Need to add one DN148 Clamp	DN148	16A00600	76090000
Need to add one DN200 Clamp	DN200	16B00600	76090000

► Male Threaded Nipple Socket



Description	øD	Part Number	H.S.Code
one side Push in fit, the other side male threaded	DN20×1/2"	16201000	76090000
one side Push in fit, the other side male threaded	DN20×3/4"	16211000	76090000
one side Push in fit, the other side male threaded	DN20×1"	16221000	76090000
one side Push in fit, the other side male threaded	DN25×3/4"	16311000	76090000
one side Push in fit, the other side male threaded	DN25×1"	16321000	76090000
one side Push in fit, the other side male threaded	DN25×1"1/4"	16331000	76090000
one side Push in fit, the other side male threaded	DN32×1"	16421000	76090000
one side Push in fit, the other side male threaded	DN32×1"1/4"	16431000	76090000
one side Push in fit, the other side male threaded	DN32×1"1/2"	16441000	76090000
one side Push in fit, the other side male threaded	DN42×1"	16521000	76090000
one side Push in fit, the other side male threaded	DN42×1"1/4"	16531000	76090000
one side Push in fit, the other side male threaded	DN42×1"1/2"	16541000	76090000
one side Push in fit, the other side male threaded	DN42×2"	16551000	76090000
Need to add one DN50 Clamp	DN50×2"	2019551000	76090000
Need to add one DN65 Clamp	DN65×2"1/2"	2019661000	76090000
Need to add one DN80 Clamp	DN80×3"	2019881000	76090000

► Female Threaded Nipple Socket



Description	øD	Part Number	H.S.Code
one side Push in fit, the other side female threaded	DN20×1/2"	16201100	76090000
one side Push in fit, the other side female threaded	DN20×3/4"	16211100	76090000
one side Push in fit, the other side female threaded	DN25×1/2"	16301100	76090000
one side Push in fit, the other side female threaded	DN25×3/4"	16311100	76090000
one side Push in fit, the other side female threaded	DN25×1"	16321100	76090000
one side Push in fit, the other side female threaded	DN32×3/4"	16411100	76090000
one side Push in fit, the other side female threaded	DN32×1"	16421100	76090000
one side Push in fit, the other side female threaded	DN32×1"1/4"	16431100	76090000
one side Push in fit, the other side female threaded	DN42×1"	16521100	76090000
one side Push in fit, the other side female threaded	DN42×1"1/4"	16531100	76090000
one side Push in fit, the other side female threaded	DN42×1"1/2"	16541100	76090000
one side Push in fit, the other side female threaded	DN42×2"	16551100	76090000
Need to add one DN50 Clamp	DN50×1"1/2"	2019541100	76090000
Need to add one DN50 Clamp	DN50×2"	2019551100	76090000
Need to add one DN65 Clamp	DN65×2"1/2"	2019661100	76090000
Need to add one DN80 Clamp	DN80×3"	2019881100	76090000
Need to add one DN100 Clamp	DN100×3"	2015981100	76090000
Square female threaded Nipple Socket	DN125×4"	F16C91100	76090000
Need to add one DN148 Clamp	DN148×3"	16A81100	76090000
Need to add one DN148 Clamp	DN148×4"	16A91100	76090000
Need to add one DN200 Clamp	DN200×3"	16B81100	76090000
Need to add one DN200 Clamp	DN200×4"	16B91100	76090000

► Female Threaded Quick Drop



Description	øD	Part Number	H.S.Code
/	DN25×1/2"	16301600	76090000
/	DN25×3/4"	16311600	76090000
/	DN32×1/2"	16401600	76090000
/	DN32×3/4"	16411600	76090000
/	DN42×1/2"	16501600	76090000
/	DN42×3/4"	16511600	76090000
/	DN50×1/2"	06A501600	76090000
/	DN50×3/4"	06A511600	76090000
/	DN50×1"1/4"	06A531600	76090000
/	DN65×1/2"	2019601600	76090000
/	DN65×3/4"	2019611600	76090000
/	DN65×1"1/4"	2019631600	76090000
/	DN80×1/2"	2019801600	76090000
/	DN80×3/4"	2019811600	76090000
/	DN80×1"1/4"	2019831600	76090000
/	DN100×1/2"	2021901600	76090000
/	DN100×3/4"	2021911600	76090000
/	DN100×1" 1/4"	2021931600	76090000
/	DN125×1"	16C21600	76090000
/	DN125×1"1/4"	16C31600	76090000
/	DN125×1"1/2"	16C41600	76090000
/	DN125×2"	16C51600	76090000
/	DN148×1"	16A21600	76090000
/	DN148×1"1/4"	16A31600	76090000
/	DN148×1"1/2"	16A41600	76090000
/	DN148×2"	16A51600	76090000
/	DN200×1"	16B21600	76090000
/	DN200×1"1/4"	16B31600	76090000
/	DN200×1"1/2"	16B41600	76090000
/	DN200×2"	16B51600	76090000

► Quick Drop



Description	øD	Part Number	H.S.Code
/	DN25-DN20	16321500	76090000
/	DN32-DN20	16421500	76090000
/	DN42-DN20	16521500	76090000
/	DN42-DN25	16531500	76090000
/	DN50-DN20	06A511500	76090000
/	DN50-DN25	06A521500	76090000
/	DN50-DN32	06A531500	76090000
/	DN65-DN20	2019611500	76090000
/	DN65-DN25	2019621500	76090000
/	DN65-DN32	2019631500	76090000
/	DN80-DN20	2019811500	76090000
/	DN80-DN25	2019821500	76090000
/	DN80-DN32	2019831500	76090000
/	DN100-DN20	2021911500	76090000
/	DN100-DN25	2021921500	76090000
/	DN100-DN32	2021931500	76090000
/	DN100-DN42	2021941500	76090000
/	DN125-DN20	2019C11500	76090000
/	DN125-DN25	2019C21500	76090000
/	DN125-DN32	2019C31500	76090000
/	DN148-DN20	2019A11500	76090000
/	DN148-DN25	2019A21500	76090000
/	DN148-DN32	2019A31500	76090000
/	DN200-DN20	2019B11500	76090000
/	DN200-DN25	2019B21500	76090000
/	DN200-DN32	2019B31500	76090000

► Female Threaded Brass Put in Fit Ball Valve



Description	øD	Part Number	H.S.Code
One side Put in fit, the other side female threaded brass ball valve	DN20×3/4"	16214700	8481901000
One side Put in fit, the other side female threaded brass ball valve	DN25×1"	16324700	8481901000

► Put in Fit Ball Valve



Description	øD	Part Number	H.S.Code
Put in Fit Brass Ball Valve	DN20	16225700	8481901000
Put in Fit Brass Ball Valve	DN25	16335700	8481901000
Put in Fit Brass Ball Valve	DN32	16445700	8481901000
Put in Fit Brass Ball Valve	DN42	2019445700	8481901000
Need to add two DN50 Clamps	DN50	2019555700	8481901000

► Female Threaded SS Ball Valve



Description	øD	Part Number	H.S.Code
SUS304	DN25	20062278BU	8481901000
SUS304	DN32	20063378BU	8481901000
SUS304	DN40	20064478BU	8481901000
SUS304	DN50	20065578BU	8481901000
SUS304	DN65	20066678BU	8481901000
SUS304	DN80	20068878BU	8481901000

► Internal & External Threaded Brass Ball Valve



Description	øD	Part Number	H.S.Code
/	1/2"	2006002400	8481901000
/	3/4"	2006112400	8481901000

► Internal & External Threaded SS Ball Valve



Description	øD	Part Number	H.S.Code
SUS304	1/2"	20060024BU	8481901000
SUS304	3/4"	20061124BU	8481901000
SUS304	1"	20062224BU	8481901000

► Put in Fit Handle SS Butterfly Valve



Description	øD	Part Number	H.S.Code
SUS304, Aluminum alloy flange, EPDM, Need to add two DN50 Clamps	DN50	2019551401	8481901000
SUS304, Aluminum alloy flange, EPDM, Need to add two DN65 Clamps	DN65	2019661401	8481901000
SUS304, Aluminum alloy flange, EPDM, Need to add two DN80 Clamps	DN80	2019881401	8481901000
SUS304, Aluminum alloy flange, EPDM, Need to add two DN100 Clamps	DN100	2015991401	8481901000
SUS304, Aluminum alloy flange, EPDM, Put in fit turbo SS butterfly valve	DN125	2015CC1401	8481901000
SUS304, Aluminum alloy flange, EPDM, Need to add two DN148 Clamps	DN148	2015AA1401	8481901000
SUS304, Aluminum alloy flange, EPDM, Need to add two DN200 Clamps	DN200	2015BB1401	8481901000

► Put in Fit Handle SS Butterfly Valve



Description	øD	Part Number	H.S.Code
SUS304, Aluminum alloy flange, Fluorine rubber sealing, Need to add two DN50 Clamps	DN50	F19551401	8481901000
SUS304, Aluminum alloy flange, Fluorine rubber sealing, Need to add two DN65 Clamps	DN65	F19661401	8481901000
SUS304, Aluminum alloy flange, Fluorine rubber sealing, Need to add two DN80 Clamps	DN80	F19881401	8481901000
SUS304, Aluminum alloy flange, Fluorine rubber sealing, Need to add two DN100 Clamps	DN100	F19991401	8481901000

► Put in Fit SS Turbo Butterfly Valve



Description	øD	Part Number	H.S.Code
SUS304, Aluminum alloy flange, Fluorine rubber sealing, Put in fit turbo SS butterfly valve	DN125	F19CC1401	8481901000
SUS304, Aluminum alloy flange, Fluorine rubber sealing, Need to add two DN148 Clamps	DN148	F19AA1401	8481901000
SUS304, Aluminum alloy flange, Fluorine rubber sealing, Need to add two DN200 Clamps	DN200	F19BB1401	8481901000

► Put in Fit Handle SS Butterfly Valve



Description	øD	Part Number	H.S.Code
Suitable for Bead Rolled Pipe, Fluorine Rubber Sealing	DN50	F06A551401	8481901000
Suitable for Bead Rolled Pipe, Fluorine Rubber Sealing	DN65	F06A661401	8481901000
Suitable for Bead Rolled Pipe, Fluorine Rubber Sealing	DN80	F06A881401	8481901000

▶ Handle Lever Wafer SS Butterfly Valve Spool



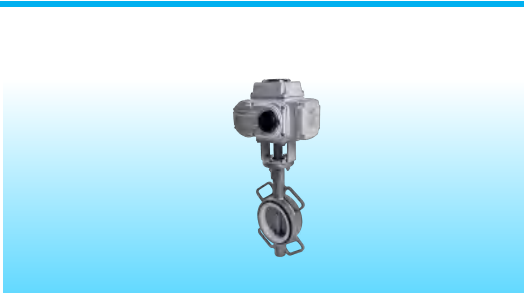
Description	øD	Part Number	H.S.Code
SUS304, EPDM	DN50	2006551700	8481901000
SUS304, EPDM	DN65	2006661700	8481901000
SUS304, EPDM	DN80	2006881700	8481901000

▶ Turbo Wafer SS Butterfly Valve Spool



Description	øD	Part Number	H.S.Code
SUS304, EPDM	DN100	2006991701	8481901000
SUS304, EPDM	DN125	2006CC1701	8481901000
SUS304, EPDM	DN148	2006AA1701	8481901000
SUS304, EPDM	DN200	2015BB1701	8481901000
SUS304, EPDM	DN250	2015DD1701	8481901000
SUS304, EPDM	DN300	2015EE1701	8481901000

▶ Electric Actuated Wafer SS Butterfly Valve Spool



Description	øD	Part Number	H.S.Code
SUS304, EPDM	DN65	176686BU	8481901000
SUS304, EPDM	DN80	178886BU	8481901000
SUS304, EPDM	DN100	179986BU	8481901000
SUS304, EPDM	DN125	17CC86BU	8481901000
SUS304, EPDM	DN148	17AA86BU	8481901000
SUS304, EPDM	DN200	17BB86BU	8481901000

► Pneumatic Actuated Wafer SS Butterfly Valve Spool



Description	øD	Part Number	H.S.Code
SUS304, EPDM	DN65	176687BU	8481901000
SUS304, EPDM	DN80	178887BU	8481901000
SUS304, EPDM	DN100	179987BU	8481901000
SUS304, EPDM	DN125	17CC87BU	8481901000
SUS304, EPDM	DN148	17AA87BU	8481901000
SUS304, EPDM	DN200	17BB87BU	8481901000

► Handle Lever Wafer CS Butterfly Valve Spool



Description	øD	Part Number	H.S.Code
WCB, SUS304 Stainless Steel core, EPDM	DN50	2006551800	8481901000
WCB, SUS304 Stainless steel core, EPDM	DN65	2006661800	8481901000
WCB, SUS304 Stainless steel core, EPDM	DN80	2006881800	8481901000

► Turbo Wafer CS Butterfly Valve Spool



Description	øD	Part Number	H.S.Code
WCB, SUS304 Stainless steel core, EPDM	DN100	2006991801	8481901000
WCB, SUS304 Stainless steel core, EPDM	DN125	2006CC1801	8481901000
WCB, SUS304 Stainless steel core, EPDM	DN148	2006AA1801	8481901000
WCB, SUS304 Stainless steel core, EPDM	DN200	2015BB1801	8481901000

► Electric Actuated Wafer CS Butterfly Valve Spool



Description	øD	Part Number	H.S.Code
WCB, SUS304 Stainless steel core, EPDM	DN65	17668600	8481901000
WCB, SUS304 Stainless steel core, EPDM	DN80	17888600	8481901000
WCB, SUS304 Stainless steel core, EPDM	DN100	17998600	8481901000
WCB, SUS304 Stainless steel core, EPDM	DN125	17CC8600	8481901000
WCB, SUS304 Stainless steel core, EPDM	DN148	17AA8600	8481901000
WCB, SUS304 Stainless steel core, EPDM	DN200	17BB8600	8481901000

► Pneumatic Actuated Wafer CS Butterfly Valve Spool



Description	øD	Part Number	H.S.Code
WCB, SUS304 Stainless steel core, EPDM	DN65	17668700	8481901000
WCB, SUS304 Stainless steel core, EPDM	DN80	17888700	8481901000
WCB, SUS304 Stainless steel core, EPDM	DN100	17998700	8481901000
WCB, SUS304 Stainless steel core, EPDM	DN125	17CC8700	8481901000
WCB, SUS304 Stainless steel core, EPDM	DN148	17AA8700	8481901000
WCB, SUS304 Stainless steel core, EPDM	DN200	17BB8700	8481901000

► Handle Wafer SS Butterfly Valve Spool



Description	øD	Part Number	H.S.Code
SUS304,Fluorine rubber sealing	DN50	F19551700	8481901000
SUS304,Fluorine rubber sealing	DN65	F19661700	8481901000
SUS304,Fluorine rubber sealing	DN80	F19881700	8481901000

► Turbo Wafer SS Butterfly Valve Spool



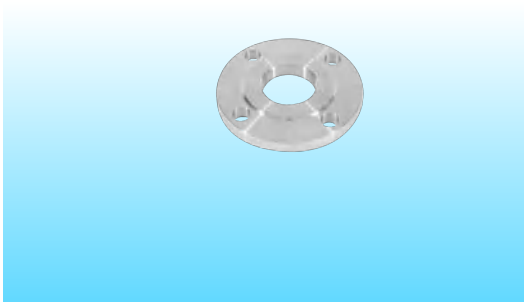
Description	øD	Part Number	H.S.Code
SUS304,Fluorine rubber sealing	DN100	F19991701	8481901000
SUS304,Fluorine rubber sealing	DN125	F19CC1701	8481901000
SUS304,Fluorine rubber sealing	DN148	F19AA1701	8481901000
SUS304,Fluorine rubber sealing	DN200	F19BB1701	8481901000
SUS304,Fluorine rubber sealing	DN250	F19DD1701	8481901000
SUS304,Fluorine rubber sealing	DN300	F19EE1701	8481901000

► SS Female Threaded Flange



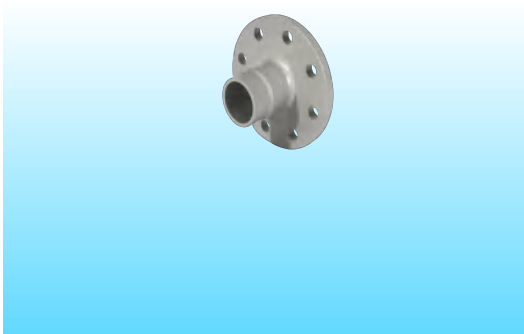
Description	øD	Part Number	H.S.Code
SUS304	DN20×3/4"	2006112801	76090000
SUS304	DN25×1"	2006222801	76090000
SUS304	DN32×1"1/4"	2006332801	76090000
SUS304	DN40×1"1/2"	2006442801	76090000
SUS304	DN50×1"	2006522801	76090000
SUS304	DN50×1"1/4"	2006532801	76090000
SUS304	DN50×1"1/2"	2006542801	76090000
SUS304	DN50×2"	2006552801	76090000
SUS304	DN65×1"	2006622801	76090000
SUS304	DN65×1"1/4"	2006632801	76090000
SUS304	DN65×1"1/2"	2006642801	76090000
SUS304	DN65×2"	2006652801	76090000
SUS304	DN65×2"1/2"	2006662801	76090000
SUS304	DN80×1"	2006822801	76090000
SUS304	DN80×1"1/4"	2006832801	76090000
SUS304	DN80×1"1/2"	2006842801	76090000
SUS304	DN80×2"	2006852801	76090000
SUS304	DN80×2"1/2"	2006862801	76090000
SUS304	DN80×3"	2006882801	76090000
SUS304	DN100×1"1/4"	2006932801	76090000
SUS304	DN100×1"1/2"	2006942801	76090000
SUS304	DN100×2"	2006952801	76090000
SUS304	DN100×2"1/2"	2006962801	76090000
SUS304	DN100×3"	2006982801	76090000
SUS304	DN100×4"	2006992801	76090000
SUS304	DN125×2"	2006C52801	76090000
SUS304	DN125×2"1/2"	2006C62801	76090000
SUS304	DN125×3"	2006C82801	76090000

► SS Female Threaded Flange



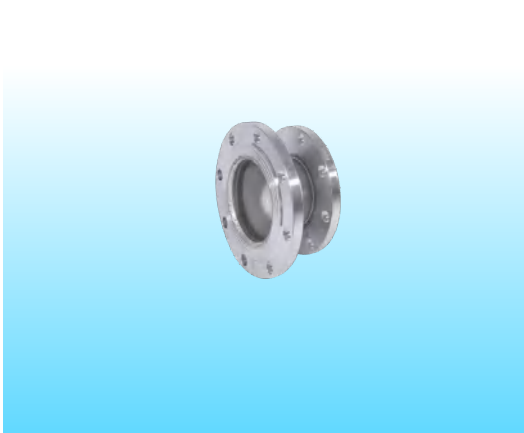
Description	øD	Part Number	H.S.Code
SUS304	DN125×4"	2006C92801	76090000
SUS304	DN150×1"1/2"	2006A42801	76090000
SUS304	DN150×2"	2006A52801	76090000
SUS304	DN150×2"1/2"	2006A62801	76090000
SUS304	DN150×3"	2006A82801	76090000
SUS304	DN200×2"1/2"	2006B62801	76090000
SUS304	DN200×3"	2006B82801	76090000
SUS304	DN200×4"	2006B92801	76090000

► Circular Aluminum Flange



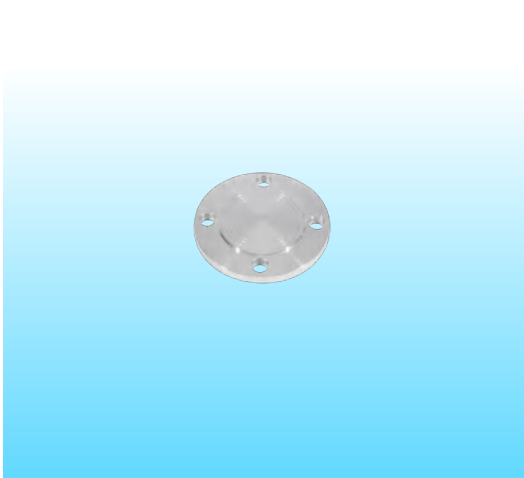
Description	øD	Part Number	H.S.Code
Need to add one DN50 Clamp	DN50×50	2019552600	76090000
Need to add one DN65 Clamp	DN65×65	2019662600	76090000
Need to add one DN80 Clamp	DN80×80	2019882600	76090000
Need to add one DN100 Clamp	DN100×100	2015992600	76090000
/	DN125×100	F16C92600	76090000
/	DN125×125	F16CC2600	76090000
Need to add one DN100 Clamp	DN148×100	2015A92600	76090000
Need to add one DN148 Clamp	DN148×148	16AA2600	76090000
Need to add one DN200 Clamp	DN200×200	2015BB2600	76090000

► SS Reducer Flange



Description	øD	Part Number	H.S.Code
Both ends Welded with SUS304 flanges	DN200×150	2006BA5801	76090000
Both ends Welded with SUS304 flanges	DN200×125	2006BC5801	76090000
Both ends Welded with SUS304 flanges	DN200×100	2006B95801	76090000
Both ends Welded with SUS304 flanges	DN150×125	2006AC5801	76090000
Both ends Welded with SUS304 flanges	DN150×100	2006A95801	76090000
Both ends Welded with SUS304 flanges	DN150×80	2006A85801	76090000
Both ends Welded with SUS304 flanges	DN125×100	2006C95801	76090000
Both ends Welded with SUS304 flanges	DN100×80	2006985801	76090000

► SS Blank Flange



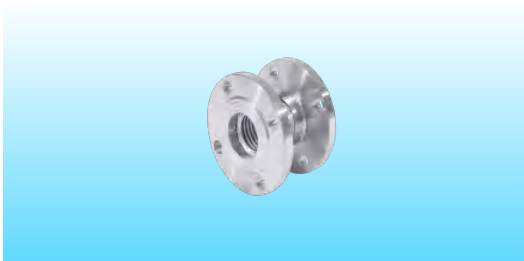
Description	øD	Part Number	H.S.Code
SUS304	DN50	2006552701	76090000
SUS304	DN65	2006662701	76090000
SUS304	DN80	2006882701	76090000
SUS304	DN100	2006992701	76090000
SUS304	DN125	2006CC2701	76090000
SUS304	DN150	2006AA2701	76090000
SUS304	DN200	2015BB2701	76090000
SUS304	DN250	2015DD2701	76090000
SUS304	DN300	2015EE2701	76090000

► Flexible Flanged Expansion Compensator



Description	øD	Part Number	H.S.Code
Flange SUS304, Compensation amount 100M 75mm*500mm	DN50	20175550BU	76090000
Flange SUS304, Compensation amount 100M 75mm*500mm	DN65	20176650BU	76090000
Flange SUS304, Compensation amount 100M 75mm*500mm	DN80	20178850BU	76090000
Flange SUS304, Compensation amount 100M 75mm*500mm	DN100	20179950BU	76090000
Flange SUS304, Compensation amount 100M 75mm*500mm	DN125	2017CC50BU	76090000
Flange SUS304, Compensation amount 100M 75mm*700mm	DN150	2017AA50BU	76090000
Flange SUS304, Compensation amount 100M 75mm*900mm	DN200	2017BB50BU	76090000
Flange SUS304, Compensation amount 100M 75mm*1400mm	DN250	2017DD50BU	76090000
Flange SUS304, Compensation amount 100M 75mm*1400mm	DN300	2017EE50BU	76090000

► SS Shockproof Flange



Description	øD	Part Number	H.S.Code
Flange SUS304*120mm	DN50×50	2006552901	76090000
Flange SUS304*120mm	DN65-DN50	2006652901	76090000
Flange SUS304*120mm	DN65-DN65	2006662901	76090000
Flange SUS304*180mm	DN80-DN65	2006862901	76090000

► SS Shockproof Flange



Description	øD	Part Number	H.S.Code
Flange SUS304*180mm	DN80-DN80	2006882901	76090000
Flange SUS304*180mm	DN100-DN80	2006982901	76090000
Flange SUS304*180mm	DN100-DN100	2006992901	76090000
Flange SUS304*180mm	DN125-DN100	2006C92901	76090000
Flange SUS304*180mm	DN125-DN125	2006CC2901	76090000
Flange SUS304*180mm	DN150-DN100	2006A92901	76090000
Flange SUS304*250mm	DN150-DN125	2006AC2901	76090000
Flange SUS304*250mm	DN150-DN150	2006AA2901	76090000
Flange SUS304*250mm	DN200-DN125	2006BC2901	76090000
Flange SUS304*250mm	DN200-DN150	2006BA2901	76090000
Flange SUS304*250mm	DN200-DN200	2006BB2901	76090000
Flange SUS304*320mm	DN250-DN150	2006DA2901	76090000
Flange SUS304*320mm	DN250-DN200	2006DB2901	76090000
Flange SUS304*320mm	DN250-DN250	2006DD2901	76090000
Flange SUS304*320mm	DN300-DN200	2006EB2901	76090000
Flange SUS304*320mm	DN300-DN250	2006ED2901	76090000
Flange SUS304*320mm	DN300-DN300	2006EE2901	76090000

► SS Male Threaded Adaptor



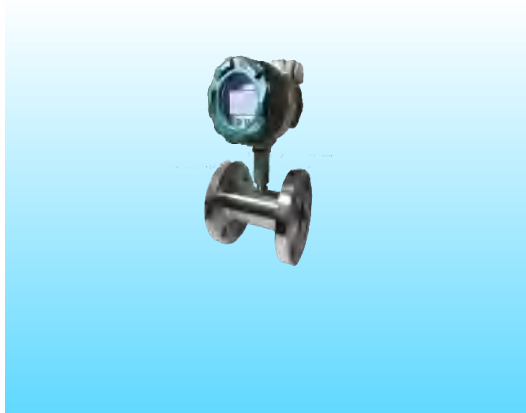
Description	øD	Part Number	H.S.Code
SUS304	1/4"×1/4"	2006004602	76090000
SUS304	1/2"×1/4"	2006004601	76090000
SUS304	1/2"×1/2"	2006004600	76090000
SUS304	3/4"×1/4"	2006104602	76090000
SUS304	3/4"×1/2"	2006104601	76090000
SUS304	3/4"×3/4"	2006114600	76090000
SUS304	1"×3/4"	2006214600	76090000
SUS304	1"×1"	2006224600	76090000
SUS304	1"1/4"×3/4"	2006314600	76090000
SUS304	1"1/4"×1"	2006324600	76090000
SUS304	1"1/4"×1"1/4"	2006334600	76090000
SUS304	1"1/2"×1"	2006424600	76090000
SUS304	1"1/2"×1"1/4"	2006434600	76090000
SUS304	1"1/2"×1"1/2"	2006444600	76090000
SUS304	2"×1"1/2"	2006544600	76090000
SUS304	2"×2"	2006554600	76090000
SUS304	2"1/2"×1"1/4"	2006634600	76090000
SUS304	2"1/2"×1"1/2"	2006644600	76090000
SUS304	2"1/2"×2"	2006654600	76090000
SUS304	2"1/2"×2"1/2"	2006664600	76090000
SUS304	3"×2"1/2"	2006864600	76090000
SUS304	3"×3"	2006884600	76090000
SUS304	4"×3"	2006984600	76090000
SUS304	4"×4"	2006994600	76090000

► SS Bushing



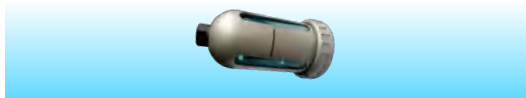
Description	øD	Part Number	H.S.Code
SUS304	1/2"×1/4"	2006005300	76090000
SUS304	3/4"×1/2"	2006105300	76090000
SUS304	1"×1/2"	2006205300	76090000
SUS304	1"×3/4"	2006215300	76090000
SUS304	1"1/4"×1/2"	2006305300	76090000
SUS304	1"1/4"×3/4"	2006315300	76090000
SUS304	1"1/4"×1"	2006325300	76090000
SUS304	1"1/2"×3/4"	2006415300	76090000
SUS304	1"1/2"×1"	2006425300	76090000
SUS304	1"1/2"×1"1/4"	2006435300	76090000
SUS304	2"×1"	2006525300	76090000
SUS304	2"×1"1/4"	2006535300	76090000
SUS304	2"×1"1/2"	2006545300	76090000
SUS304	2"1/2"×1"1/4"	2006635300	76090000
SUS304	2"1/2"×1"1/2"	2006645300	76090000
SUS304	2"1/2"×2"	2006655300	76090000
SUS304	3"×1"1/4"	2006835300	76090000
SUS304	3"×1"1/2"	2006845300	76090000
SUS304	3"×2"	2006855300	76090000
SUS304	3"×2"1/2"	2006865300	76090000
SUS304	4"×2"	2006955300	76090000
SUS304	4"×2"1/2"	2006965300	76090000
SUS304	4"×3"	2006985300	76090000

► Vortex Flow Meter



Description	øD	Part Number	H.S.Code
LUGB	DN40	WJ002508	9026100000
LUGB	DN50	WJ002504	9026100000
LUGB	DN65	WJ002507	9026100000
LUGB	DN80	WJ002506	9026100000
LUGB	DN100	WJ002505	9026100000
LUGB	DN125	WJ002503	9026100000
LUGB	DN150	WJ002500	9026100000
LUGB	DN200	WJ002501	9026100000

► Auto Drain Valve



Description	øD	Part Number	H.S.Code
AD402-04 1/2" female threaded inlet 3/8" female threaded exit	1/2"×3/8"	2006007601	8481804090

► SS Female Adaptor



Description	øD	Part Number	H.S.Code
SUS304, Full Coupling	1/2"×1/4"	2006005500	76090000
SUS304, Full Coupling	3/4"×1/2"	2006105500	76090000
SUS304, Full Coupling	3/4"	2006115500	76090000
SUS304, Full Coupling	1"×1/2"	2006205500	76090000
SUS304, Full Coupling	1"×3/4"	2006215500	76090000
SUS304, Full Coupling	1"×1"	2006225500	76090000
SUS304, Full Coupling	1"1/4"×1"	2006325500	76090000
SUS304, Reducing Coupling	1"1/4"×1"1/4"	2006335500	76090000
SUS304, Reducing Coupling	1"1/2"×1"1/4"	2006435500	76090000
SUS304, Reducing Coupling	1"1/2"×1"1/2"	2006445500	76090000
SUS304, Reducing Coupling	2"×1"1/4"	2006535500	76090000
SUS304, Reducing Coupling	2"×1"1/2"	2006545500	76090000
SUS304, Full Coupling	2"×2"	2006555500	76090000
SUS304, Reducing Coupling	2"1/2"×1"1/4"	2006635500	76090000
SUS304, Reducing Coupling	2"1/2"×1"1/2"	2006645500	76090000
SUS304, Reducing Coupling	2"1/2"×2"	2006655500	76090000
SUS304, Reducing Coupling	2"1/2"	2006665500	76090000
SUS304, Reducing Coupling	3"×1"1/4"	2006835500	76090000
SUS304, Reducing Coupling	3"×1"1/2"	2006845500	76090000
SUS304, Reducing Coupling	3"×2"	2006855500	76090000
SUS304, Reducing Coupling	3"×2"1/2"	2006865500	76090000
SUS304, Full Coupling	3"×3"	2006885500	76090000
SUS304, Reducing Coupling	4"×1"1/2"	2006945500	76090000
SUS304, Reducing Coupling	4"×2"	2006955500	76090000
SUS304, Reducing Coupling	4"×2"1/2"	2006965500	76090000
SUS304, Reducing Coupling	4"×3"	2006985500	76090000
SUS304, Full Coupling	4"×4"	2006995500	76090000

► Flanged Swing Check Valve



Description	øD	Part Number	H.S.Code
Brass	DN50	16557300	84813000
Brass	DN65	16667300	84813000
Brass	DN80	16887300	84813000
Brass	DN100	16997300	84813000
Brass	DN125	16CC7300	84813000
Brass	DN150	16AA7300	84813000
Brass	DN200	16BB7300	84813000

► Female Threaded Swing Check Valve



Description	øD	Part Number	H.S.Code
Brass, 1/2" Female Threaded	DN15	17007300	84813000
Brass, 3/4" Female Threaded	DN20	17117300	84813000
Brass, 1" Female Threaded	DN25	17227300	84813000
Brass, 1 1/4" Female Threaded	DN32	17337300	84813000
Brass, 1 1/2" Female Threaded	DN40	17447300	84813000

► Uubber Sleeve Nut



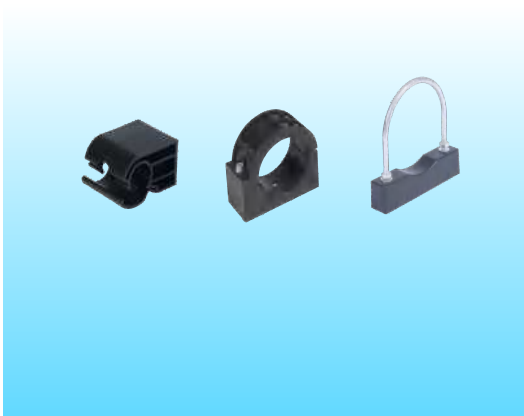
Description	øD	Part Number	H.S.Code
Fasten the C-shaped slotted Steel and DN20-DN65 Pipe Clip	M8	200600V501	3923500000
Fasten the C-shaped slotted Steel and DN80 Pipe Clip, the C-shaped slotted Steel and C channel post base	M10	200600V502	3923500000

► Pneumatic Male Connector



Description	øD	Part Number	H.S.Code
Brass,φ8	1/2"	2006004308	7307190000
Brass,φ10	1/2"	2006004310	7307190000
Brass,φ12	1/2"	2006004312	7307190000
Brass,φ14	1/2"	2006004314	7307190000
Brass,φ16	1/2"	2006004316	7307190000
Brass,φ8	3/4"	2006104308	7307190000
Brass,φ10	3/4"	2006104310	7307190000
Brass,φ12	3/4"	2006104312	7307190000
Brass,φ14	3/4"	2006104314	7307190000
Brass,φ16	3/4"	2006104316	7307190000
Brass,φ8	3/8"	2006004317	7307190000

► Pipe Clip



Description	øD	Part Number	H.S.Code
Pipe Clamp (Polymer), PP, DN20, inlay with M10 nut	DN20	16222100	760900000
Pipe Clamp (Polymer), PP, DN25, inlay with M10 nut	DN25	16332100	760900000
Pipe Clamp (Polymer), PP, NDN2, High Pipe Clamp, inlay with M10 nut	DN32	16442100	760900000
PP, DN40, inlay with M10 nut	DN42	16552100	760900000
PP, DN50, ø10.8 hole, without nut	DN50	2006552100	760900000
PP, DN65, ø10.8 hole, without nut	DN65	2006662100	760900000
PP, DN80, inlay with M10 nut	DN80	2019882100	760900000
PP, DN100, inlay with M10 nut	DN100	2006992100	760900000
U Shape Clip, M10	DN125	2019CC2100	760900000
U Shape Clamp, M10	DN148	2019AA2100	760900000
U Shape Clamp, M10	DN200	2019BB2100	760900000

▶ Aluminum alloy Manifold



Description	øD	Part Number	H.S.Code
1"1/4" female threaded inlets, 1/2" female threaded exit,1/2" female threaded exhausts	1"1/4"×1/2"*4	2006308204	3917
1" female threaded inlets, 1/2" female threaded exit,1/2" female threaded exhausts	1"×1/2"*4	2006208204	3917

▶ Stainless Steel Manifold



Description	øD	Part Number	H.S.Code
1"1/4" female threaded inlets, 1/2" female threaded exit,1/2" female threaded exhausts	1"1/4"×1/2"*4	2006308204	3917
1" female threaded inlets, 1/2" female threaded exit,1/2" female threaded exhausts	1"×1/2"*4	2006208204	3917

▶ Multi-line Manifold



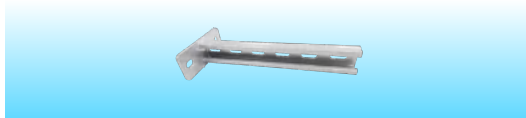
Description	øD	Part Number	H.S.Code
Aluminum alloy, female threaded exit	1/2"×1/2"X4	2006005603	760900000
Aluminum alloy, female threaded exit	1/2"×1/2"X5	2006005604	760900000
Aluminum alloy, female threaded exit	1/2"×1/2"X6	2006005605	760900000
Aluminum alloy, female threaded exit	3/4"×1/2"X4	2006005606	760900000
Aluminum alloy, female threaded exit	3/4"×1/2"X5	2006005607	760900000
Aluminum alloy, female threaded exit	3/4"×1/2"X6	2006005608	760900000

▶ Male Threaded Plug



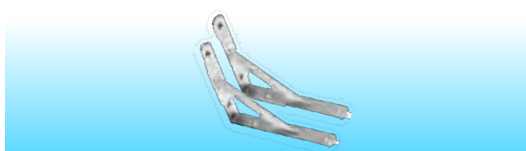
Description	øD	Part Number	H.S.Code
Male Threaded,SUS304	1/2"	150006BU	760900000

► Cantilever Bracket



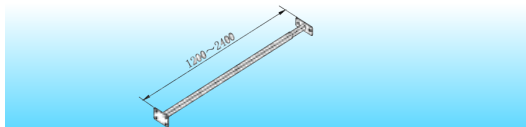
Description	øD	Part Number	H.S.Code
300mm	/	2015008300	7308900000
500mm	/	2015008301	7308900000

► Triangular Bracket



Description	øD	Part Number	H.S.Code
H300*W500*L300mm	/	2015018300	7308900000

► Adjustable Bracket



Description	øD	Part Number	H.S.Code
Telescopic range 1200-2400mm	/	2015028300	7308900000

► U Channel & U Channel Insert



Description	øD	Part Number	H.S.Code
6000mm	M10*2.0	200601V300	7216
/	210*2.5	201503V300	7216

► U Channel End Cap



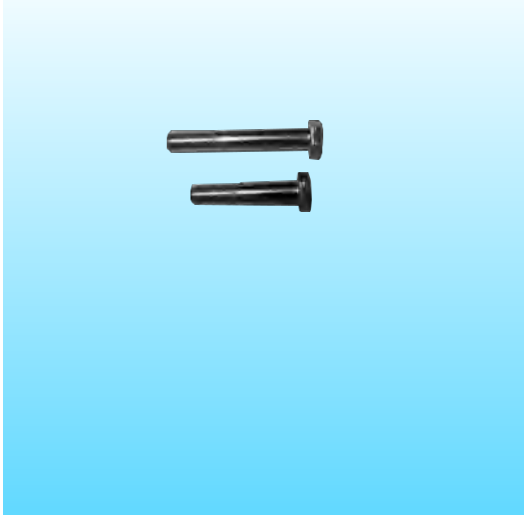
Description	øD	Part Number	H.S.Code
the U-Channel end cap	41*21	200600V400	7216

► Spring Washer



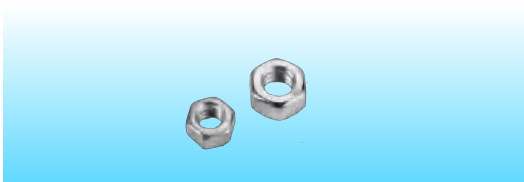
Description	øD	Part Number	H.S.Code
Suitable for M16 Flange Bolt	M16	201900W101	7318
Suitable for M20 Flange Bolt	M20	201900W102	7318
Suitable for M24 Flange Bolt	M24	201900W108	7318

► Flange Bolt



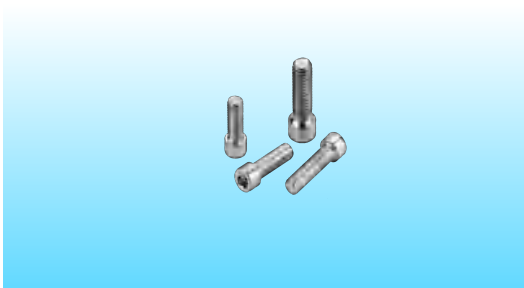
Description	øD	Part Number	H.S.Code
Set with 2pcs flat washers and 1pc spring washer	M16*60	201900V601	7318
Set with 2pcs flat washers and 1pc spring washer	M16*70	201900V602	7318
Set with 2pcs flat washers and 1pc spring washer	M16*90	201900V603	7318
Set with 2pcs flat washers and 1pc spring washer	M16*100	201900V604	7318
Set with 2pcs flat washers and 1pc spring washer	M16*120	201900V605	7318
Set with 2pcs flat washers and 1pc spring washer	M20*90	201900V606	7318
Set with 2pcs flat washers and 1pc spring washer	M20*130	201900V607	7318
Set with 2pcs flat washers and 1pc spring washer	M20*150	201900V608	7318
Set with 2pcs flat washers and 1pc spring washer	M16*110	201900V611	7318
Set with 2pcs flat washers and 1pc spring washer	M16*135	201900V612	7318
Set with 2pcs flat washers and 1pc spring washer	M24*110	201900V613	7318
Set with 2pcs flat washers and 1pc spring washer	M16*80	201900V616	7318
Set with 2pcs flat washers and 1pc spring washer	M20*140	201900V617	7318
Set with 2pcs flat washers and 1pc spring washer	M16*130	201900V618	7318
Set with 2pcs flat washers and 1pc spring washer	M24*180	201900V619	7318
Set with 2pcs flat washers and 1pc spring washer	M24*190	201900V620	7318

► Hex Nut



Description	øD	Part Number	H.S.Code
Suitable for DN20-DN65 Pipe Clip	M8	201900V701	7318
Suitable for DN80 Pipe Clip	M10	201900V702	7318
Suitable for M16 Flange Bolt	M16	201900V703	7318
Suitable for M20 Flange Bolt	M20	201900V704	7318
Suitable for M24 Flange Bolt	M24	201900V708	7318

► Hexagon Socket Bolt



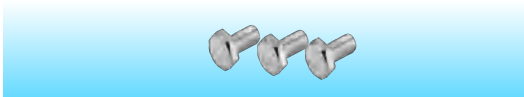
Description	øD	Part Number	H.S.Code
Hexagon socket bolt	M6*25	201900V801	7318
Hexagon socket bolt	M8*25	201900V803	7318
Fasten the U-Channel and DE20,DE25, DN32-DN65 Pipe Clip	M8*30	201900V804	7318
Hexagon socket bolt	M8*80	201900V805	7318
Hexagon socket bolt	M10*25	201900V806	7318
Fasten the U-Channel and DN80,DE94, DN100 Pipe Clip	M10*30	201900V807	7318
Fasten the U-Channel and DE32-DE70 Pipe Clip	M8*40	201900V808	7318
Hexagon socket bolt	M8*35	201900V824	7318

► Flat Gasket



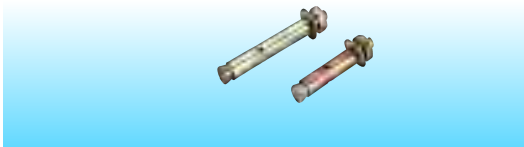
Description	øD	Part Number	H.S.Code
Fasten the quick drop	M8	201900V901	7318
Fasten the U Channel Fixing Bracket and U-Channel	M10	201900V906	7318
Suitable for M16 Flange Bolt	M16	201900V903	7318
Suitable for M20 Flange Bolt	M20	201900V904	7318
Suitable for M24 Flange Bolt	M24	201900V907	7318

► Hex Bolts



Description	øD	Part Number	H.S.Code
Fasten the U Channel Fixing Bracket and U-Channel	M10*20	201900W001	7318

► Concrete Anchor Bolts



Description	øD	Part Number	H.S.Code
Fasten the U Channel Fixing Bracket cement, and the light Light wall brick	M8*60	200600W201	7318
Fasten the U Channel Fixing Bracket with the light Light wall brick	M8*80	200600W202	7318
Fasten the U Channel Fixing Bracket with the light Light wall brick	M12*80	200600W203	7318

► Drop-In Sleeve Anchors



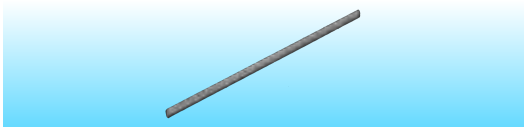
Description	øD	Part Number	H.S.Code
Fasten the pipe clip when installed into the wall	M6*25	200600W301	7318
Fasten the DN20-DN65 pipe clip when installed into the wall	M8*30	200600W303	7318
Fasten the DN80 pipe clip when installed into the wall	M10*40	200600W305	7318

► Dynabolt Sleeve Anchor



Description	øD	Part Number	H.S.Code
Fastened the DN20-DN65 pipe clip when installed into the wall	M8*60	1800W303	7318
Fastened the DN80 pipe clip when installed into the wall	M10*80	1800W305	7318

► Threaded Rod



Description	øD	Part Number	H.S.Code
3000mm	M8	200600W401	7318
3000mm	M10	200600W402	7318

► Threaded Rod Connector



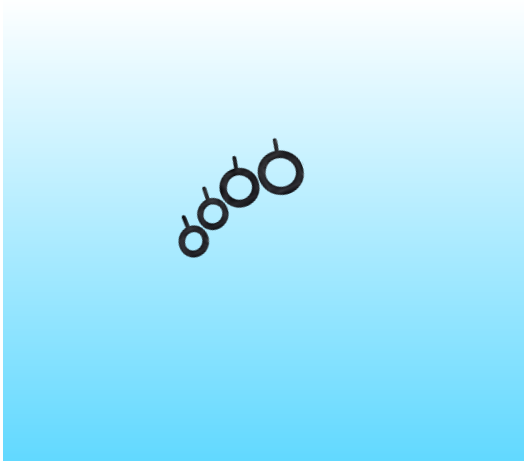
Description	øD	Part Number	H.S.Code
/	M8	200600U300	7318
/	M10	200601U300	7318

► Girder Clamp



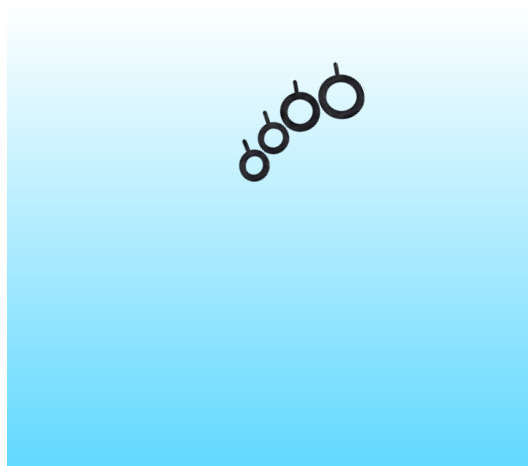
Description	øD	Part Number	H.S.Code
/	M8	200600W501	76090000
/	M10	200600W502	76090000
/	M11	200600W503	76090000

► Nitrile Flange Gasket



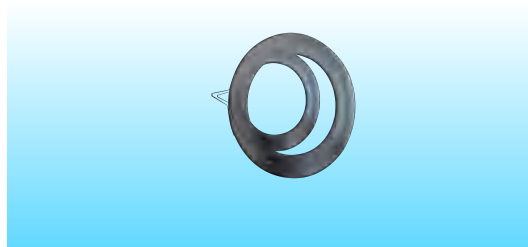
Description	øD	Part Number	H.S.Code
3-5mm Nitrile rubber	DN20	200611W602	7318
3-5mm Nitrile rubber	DN25	200622W602	7318
3-5mm Nitrile rubber	DN32	200633W602	7318
3-5mm Nitrile rubber	DN40	200644W602	7318
3-5mm Nitrile rubber	DN50	200655W602	7318
3-5mm Nitrile rubber	DN65	200666W602	7318
3-5mm Nitrile rubber	DN80	200688W602	7318
3-5mm Nitrile rubber	DN100	200699W602	7318
3-5mm Nitrile rubber	DN125	2006CCW602	7318
3-5mm Nitrile rubber	DN150	2006AAW602	7318
3-5mm Nitrile rubber	DN200	2015BBW602	7318
3-5mm Nitrile rubber	DN250	2015DDW602	7318
3-5mm Nitrile rubber	DN300	2015EEW602	7318

► PTFE Flange Gasket



Description	øD	Part Number	H.S.Code
3-5mm PTFE	DN20	200611W64F	7318
3-5mm PTFE	DN25	200622W64F	7318
3-5mm PTFE	DN32	200633W64F	7318
3-5mm PTFE	DN40	200644W64F	7318
3-5mm PTFE	DN50	200655W64F	7318
3-5mm PTFE	DN65	200666W64F	7318
3-5mm PTFE	DN80	200688W64F	7318
3-5mm PTFE	DN100	200699W64F	7318
3-5mm PTFE	DN125	2006CCW64F	7318
3-5mm PTFE	DN150	2006AAW64F	7318
3-5mm PTFE	DN200	2015BBW64F	7318
3-5mm PTFE	DN250	2015DDW64F	7318
3-5mm PTFE	DN300	2015EEW64F	7318

► Metal Flange Gasket



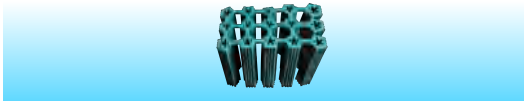
Description	øD	Part Number	H.S.Code
/	DN50	200655W601	7318
/	DN65	200666W601	7318
/	DN80	200688W601	7318
/	DN100	200699W601	7318
/	DN125	2006CCW601	7318
/	DN150	2006AAW601	7318
/	DN200	2015BBW601	7318

▶ Hexagon Self-tapping Screw



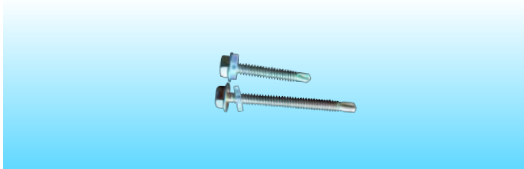
Description	øD	Part Number	H.S.Code
/	M6X50	1600X101	7318
/	M8X50	1600X102	7318

▶ Plastic Expandable Screw



Description	øD	Part Number	H.S.Code
suit for M6 self-tapping screw	M6*28	200600X001	7318
suit for M8 self-tapping screw	M8*28	200600X002	7318

▶ Self-drilling Screw



Description	øD	Part Number	H.S.Code
/	ST5.5*35	200600X103	7318
/	ST5.5*45	200600X105	7318
/	ST5.5*70	200600X106	7318
/	ST5.5*80	200600X102	7318

▶ Steel Wire Rope



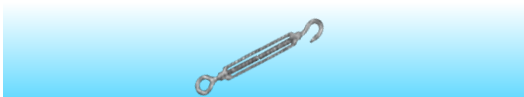
Description	øD	Part Number	H.S.Code
/	Φ12*1000mm	200602W800	7312
/	Φ10*1000mm	200600W800	7312
/	Φ8*1000mm	200601W800	7312

▶ Steel Wire Rope Clamp



Description	øD	Part Number	H.S.Code
Φ15, Galvanized	Φ15	200602W900	7312
Φ10, Galvanized	Φ10	200600W900	7312
Φ8, Galvanized	Φ8	200601W900	7312

▶ Steel Wire Rope Puller



Description	øD	Part Number	H.S.Code
Φ10, Galvanized	Φ10	200600U400	7312
Φ12, Galvanized	Φ12	200601U400	7312

▶ Steel Wire Rope Loop



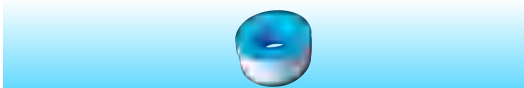
Description	øD	Part Number	H.S.Code
Φ10, Galvanized	Φ10	200600U500	7312
Φ12, Galvanized	Φ12	200601U500	7312

▶ Paint Brush



Description	øD	Part Number	H.S.Code
/	3 inches	200600M101	9603509190
/	4 inches	200600M102	9603509190

▶ PTFE Tape



Description	øD	Part Number	H.S.Code
/	/	200600X800	3920991000

▶ Air Hose Quick Coupler(Female)



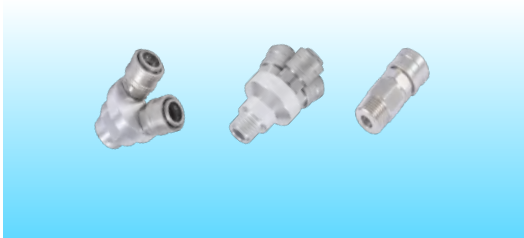
Description	øD	Part Number	H.S.Code
YOUTIAN brand, Put in fit, self-locked, Male threaded	1 way-1/2"	18006301	7307190000
YOUTIAN brand, Put in fit, self-locked, Female threaded	2 way-1/4"	18006401	7307190000
YOUTIAN brand, Put in fit, self-locked, Female threaded	3 way-1/4"	18006501	7307190000
SNS brand, Put in fit, self-locked, male threaded	1 way-1/2"	18006302	7307190000
SNS brand, Put in fit, self-locked, Female threaded	2 way-1/4"	18006402	7307190000
SNS brand, Put in fit, self-locked, Female threaded	3 way-1/4"	18006502	7307190000

▶ Air Hose Quick Coupler(Male)



Description	øD	Part Number	H.S.Code
/	Φ6	2006006600	7307190000
/	Φ8	2006006700	7307190000
/	Φ10	2006006800	7307190000
/	Φ12	2006006900	7307190000

► Pneumatic Coupler



Description	øD	Part Number	H.S.Code
Put in fit, self-locked, male threaded	1 way-1/2"	19006301	7307190000
Put in fit, self-locked, male threaded	2 way-1/2"	19006302	7307190000
Put in fit, self-locked, male threaded	3 way-1/2"	19006303	7307190000
Put in fit, self-locked, male threaded	1 way-3/4"	19006401	7307190000
Put in fit, self-locked, male threaded	2 way-3/4"	19006402	7307190000
Put in fit, self-locked, male threaded	3 way-3/4"	19006403	7307190000

► Pressure Gauge



Description	øD	Part Number	H.S.Code
0-1.6mpa(Vertical connected), Dial 100mm,1/2" (OD)	Y-100	200600Q100	9026
0-1.6mpa(Back connected), Dial 100mm,1/2" (OD)	Y-100	200600Q103	9026
0-1.6mpa(Vertical connected), Dial 60mm,1/2" (OD)	Y-60	200601Q101	9026
0-1.6mpa(Back connected), Dial 60mm,1/2" (OD)	Y-60	200601Q102	9026

► Vacuum Pressure Gauge



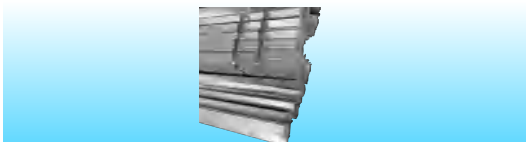
Description	øD	Part Number	H.S.Code
-0.1~0MPa(Back connected), Dial 60mm,1/2" (OD)	Y-60ZT	200601Q105	9026
-0.1~0MPa(Back connected), Dial 100mm,1/2" (OD)	Y-100ZT	200601Q106	9026

Pressure Gauge Buffer Tube



Description	øD	Part Number	H.S.Code
Stainless Steel Male & Female Threaded 1/2"	1/2"×1/2"	2006004G00	9026

► Galvanized Angle Iron



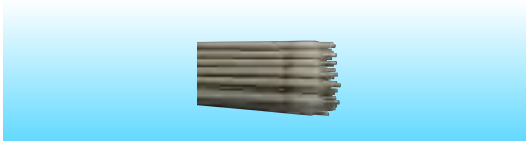
Description	øD	Part Number	H.S.Code
300mm	40*40MM	200600U130	7216210000
600mm	40*40MM	200600U160	7216210000
300mm	50mm*50mm	200650U130	7216210000
600mm	50mm*50mm	200650U160	7216210000

► Carbon Steel Welding Rod



Description	øD	Part Number	H.S.Code
300mm	ø2.5*5KG	200600U203	8311200000
300mm	ø3.2*5KG	200600U204	8311200000

► Stainless Steel Welding Rod



Description	øD	Part Number	H.S.Code
/	ø2.5*2KG	200600U201	8311300000
/	ø3.2*2KG	200600U202	8311300000
/	ø2.5*1KG	1600U201	8311300000
/	ø3.2*1KG	1600U202	8311300000

▶ Demo Case



Description	øD	Part Number	H.S.Code
Sample Box	/	1600Y003	4202990000

▶ Electric Pipe Cutter



Description	øD	Part Number	H.S.Code
/	6-220	1600Y111	8203

▶ Manual Pipe Cutter



Description	øD	Part Number	H.S.Code
NO.35S NO.29958	6-35	200600Y101	8203
NO.65S NO.31798	6-65	200600Y102	8203
NO.154 NO.31652	48-116	200600Y103	8203
NO.156 NO.31662	100-168	200600Y104	8203

▶ Pipe Cutter Replacement Wheel



Description	øD	Part Number	H.S.Code
NO:29968*2pcs, E-635,suit for 35S&65S.	3	200600Y501	8208
NO:33170*1pc, E-2558,suit for 154&156.	6	200600Y502	8208

► Pipe Deburrer



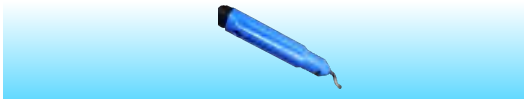
Description	øD	Part Number	H.S.Code
NO.223S NO.29983	6-36	200600Y201	8205
NO.227S NO.29993	12-54	200600Y202	8205

► File Tool



Description	øD	Part Number	H.S.Code
/	6 inches	200600M201	8203
/	8 inches	200600M202	8203
/	10 inches	200600M203	8203

► Hole Deburrer



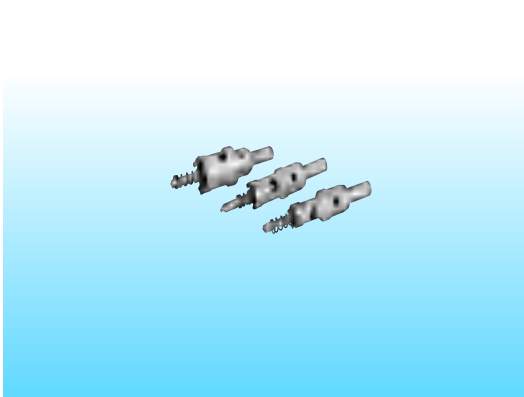
Description	øD	Part Number	H.S.Code
STILY-BIG	/	200600Y401	8205
STILY-SMALL	/	200600Y402	8205

► Adjustable Wrenches



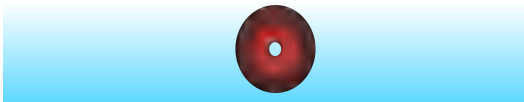
Description	øD	Part Number	H.S.Code
/	35-50	201500M301	8204
/	50-80	201500M302	8204
/	80-120	201500M303	8204

► Drilling Tool



Description	øD	Part Number	H.S.Code
Suitable for 16MM APERTURE	16	200600Y601	8207
Suitable for 19MM APERTURE	19	200600Y602	8207
Suitable for 25MM APERTURE	25	200600Y603	8207
Suitable for 32MM APERTURE	32	200600Y604	8207
Suitable for 40MM APERTURE	40	200600Y605	8207
Suitable for 30MM APERTURE	30	200600Y606	8207
Suitable for 24MM APERTURE	24	200600Y607	8207
Suitable for 48MM APERTURE	48	200600Y608	8207
Suitable for 60MM APERTURE	60	200600Y609	8207

► Hand Grinder Grinding Wheel



Description	øD	Part Number	H.S.Code
/	/	200600K400	8208

► Hand Grinder Cutting-off Wheel



Description	øD	Part Number	H.S.Code
/	/	200600K401	8208

▶ **Electronical Aluminum Pipe Grooving Machine**



Description	øD	Part Number	H.S.Code
Grooving Machine	TWG-5T	201500Z601	84621010

▶ **Cam Wheel for electronical grooving machine**



Description	øD	Part Number	H.S.Code
Suit for Aluminum Pipe Grooving Machine, Pipe øD 50-200mm, original part	DN50-200	201500K104	84621010

▶ **Recessed Wheel for electronical grooving machine**



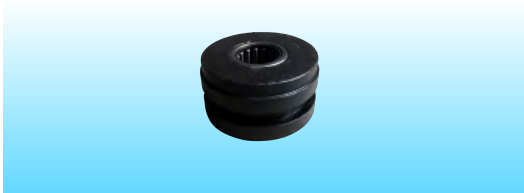
Description	øD	Part Number	H.S.Code
Suit for Aluminum Pipe Grooving Machine, Pipe øD 50-100mm, grooving width 7.6mm	DN50-65	201500K203	84621010
Suit for Aluminum Pipe Grooving Machine, Pipe øD 125-205mm, original part, grooving width 9.0mm	DN80-200	201500K204	84621010

▶ Manual Aluminum Pipe Grooving Machine



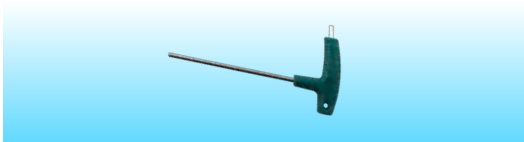
Description	øD	Part Number	H.S.Code
Grooving Machine	/	201500Z602	84621010

▶ Recessed Wheel for Manual grooving machine



Description	øD	Part Number	H.S.Code
Suit for Aluminum Pipe Grooving Machine, Pipe øD 50-100mm, grooving width 7.6mm	DN50-65	HH00049	84621010
Suit for Aluminum Pipe Grooving Machine, Pipe øD 125-205mm, original part, grooving width 9.0mm	DN80-200	HH00050	84621010

▶ Handle type Allen wrench



Description	øD	Part Number	H.S.Code
M5	M5X200	GG00090	8207
M6	M6X200	200600M500	8207
M8	M8X200	200600M501	8207
M10	M10X200	200600M505	8207